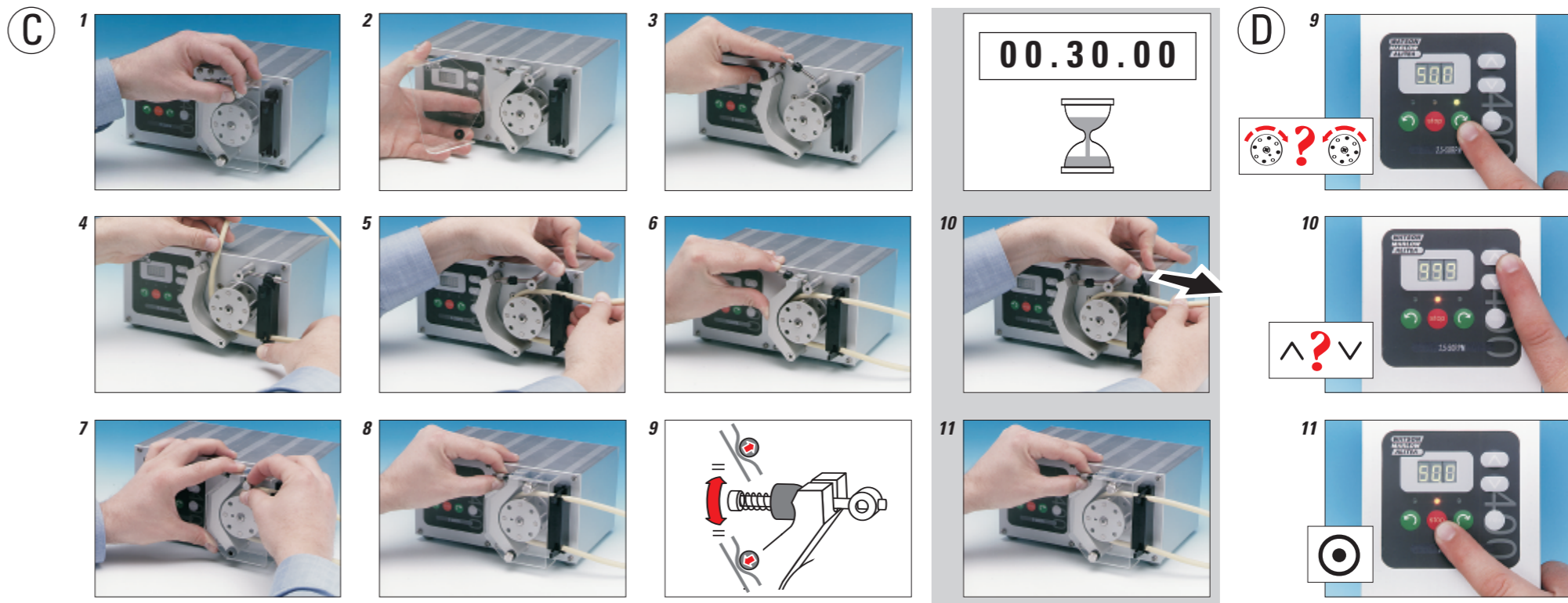


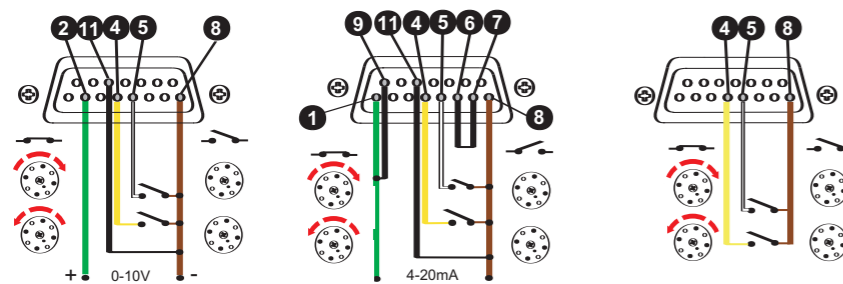
403U/R1 405U/R1



**A**

040.3\*1L.01\*U = 240V/1/50/60Hz  
 040.3\*1L.01\*E = 230V/1/50/60Hz  
 040.3\*1L.01\*A = 110V/1/60Hz  
 040.5\*1L.01\*U = 240V/1/50/60Hz  
 040.5\*1L.01\*E = 230V/1/50/60Hz  
 040.5\*1L.01\*A = 110V/1/60Hz

**B**



**Watson-Marlow Pumps Group**  
 Telephone +44 (0) 1326 370370  
 Fax +44 (0) 1326 376009  
 E-mail: [info@watson-marlow.co.uk](mailto:info@watson-marlow.co.uk)  
[www.watson-marlow.com](http://www.watson-marlow.com)

Members of the Spirax Sarco Engineering Group

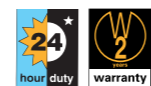


The information contained in this document is believed to be correct, but the Watson-Marlow Pumps Group accepts no liability for any errors it contains, and reserves the right to alter specifications without notice.

**WARNING**  
 This product is not designed for use in, and should not be used for, patient-connected applications.

PB0314/10

	403U/R - 50rpm 405U/R - 200rpm		+5C, +41F
	<70dBA@1m		+40C, +104F
	403U/R - 2kg 405U/R - 3.5kg		-40C, -40F
			+70C, +158F



DS Cole **CE**  
 David Cole, Managing director

2006/42/EC, 2004/108/EC,  
 2006/95/EC, BS EN60529 (IP21),  
 2006/42/EC



403U/R1, 405U/R1

