



SPX100 Duplex Hose Pump

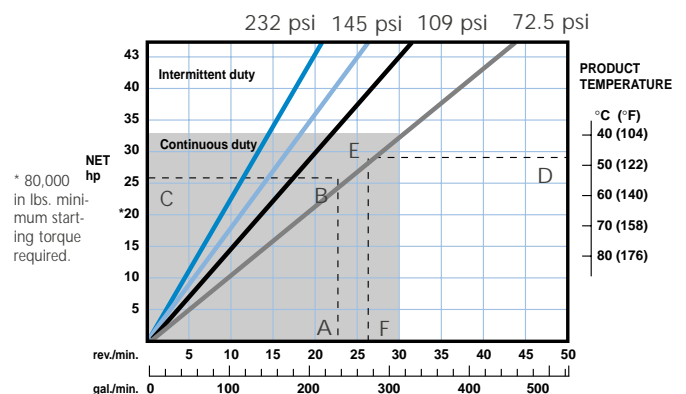
Watson-Marlow Bredel Hosepumps have proven successful in hundreds of industrial applications. Known for their ruggedness, these pumps can handle viscous, abrasive or corrosive product reliably and accurately because of their unique design. Yet, they are easy to maintain and operate.

Features and Benefits

- Increased flow to 400 gpm
- Lower pulsation design
- Twin pumpheads with common suction and discharge manifolds
- Both pump rotors always fully and centrally supported by their own high strength bearings
- Fail-safe shaft design
- Unique buffer zone provides protective barrier between pumphead and gearing
- Easy access to shims and shoes
- Ultra compact dual shaft right angle gearing
- No drive alignment for faster set-up
- No couplings or baseplate for compact footprint
- Two year warranty

The capabilities of these pumps are further enhanced by using them in a “duplex” configuration. In this version, two pumpheads are mounted on a single drive. The result is substantially increased flow rate capacity (up to 400 gpm) with significantly reduced pulsation in the output flow, in addition to a very small footprint.

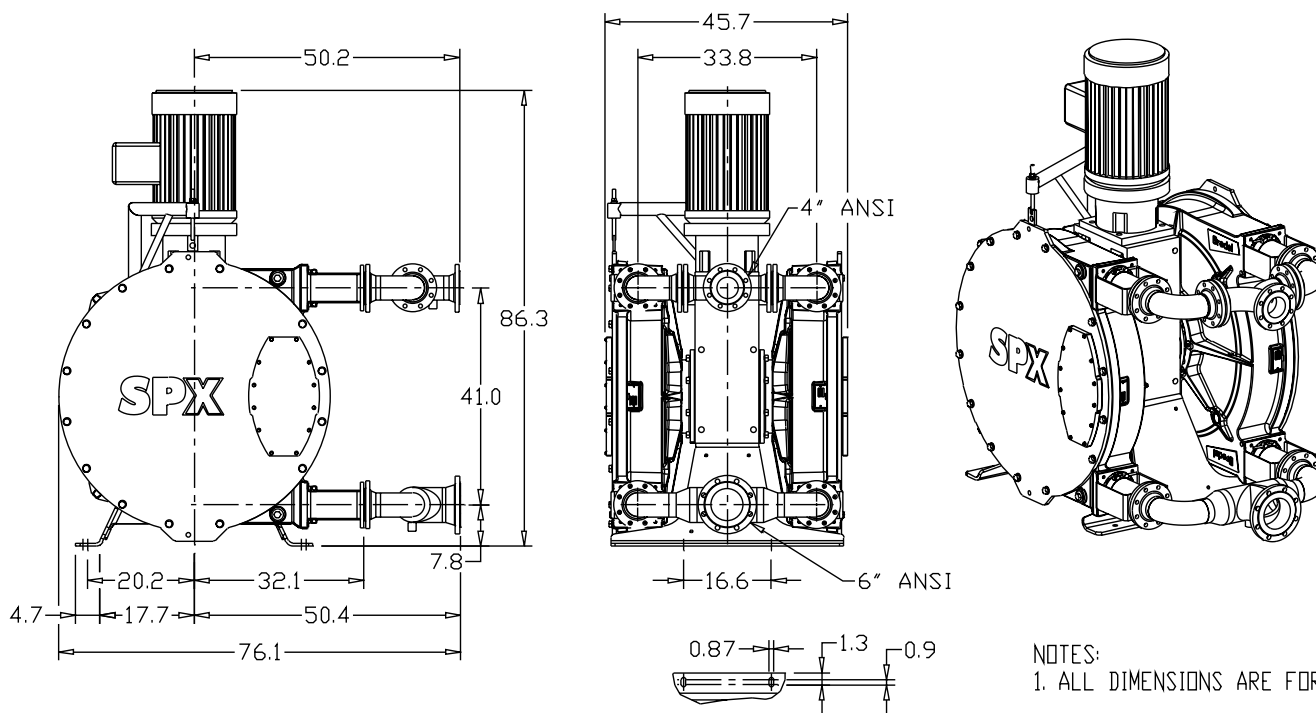
Performance SPX100 Duplex



How to calculate speed/horsepower

- | | |
|---------------------------------------|---------------------------------|
| A Flow required, indicates pump speed | D Fluid temperature |
| B Calculated discharge pressure | E Calculated discharge pressure |
| C Horsepower required | F Max recommended pump speed** |

** For maximum hose life, speed point (A) should be lower than temperature adjusted speed point (F). See example points (A) thru (F).



SPX100 Duplex Hose Pump

Technical Specifications

Displacement: 10.56 gal/rev
 Supply: 230/460 or 575 three phase
 Enclosure: TEFC
 Operating Speeds: Up to 30 rpm continuous
 Up to 38 rpm intermittent
 Flow Range: up to 400 gpm
 Discharge Pressure: up to 232 psi
 Suction pressure: 28 ft. lift to 23 psi
 Fluid Temperature Range: -4° to 176°F
 Hose Lubricant Required: 15.8 gallons
 (per pumphead)
 Shipping Weight: 6,800 lbs
 Manifold Port Sizes: Inlet: 6" 150# ANSI Flange
 Disch.: 4" 150# ANSI Flange
 Optional Accessory: Cover Lifting Arm
 Available Hose Materials: Natural Rubber, Buna N,
 Buna K, EPDM, Hypalon (pending)

Note: Dimensions shown are based on the standard pump and motor configuration. Overall length and height may vary depending on actual gearbox & motor selection.

Materials of Construction

Pumphead: Cast iron
 Rotor: Cast iron
 Cover: Mild steel
 Hub: Cast iron
 Shoes: Epoxy
 Flanges and Flange Brackets:
 Galvanized steel or 304 SS
 Flange Inserts: 316SS, Polypropylene,
 PVC, or PVDF
 Manifolds: Mild Steel or Stainless Steel
 Manifolds: Mild Steel or Stainless Steel

Frame: Mild Steel
 Shaft: Alloy steel
 Shims: 316 SS
 Seals: NBR

The information contained in this document is believed to be correct, but Watson-Marlow Bredel Pumps accepts no liability for any errors it contains, and reserves the right to alter specifications without notice.



Watson-Marlow, Inc.

37 UPTON TECHNOLOGY PARK, WILMINGTON, MA 01887-1018
 TEL: 800-282-8823, 978-658-6168 / FAX: 978-658-0041
<http://www.watson-marlow.com>